



#WeMakeEvents



iatse.co/redalert

#ExtendPUA

IATSE LOCAL 665 NEWS & VIEWS

SEPTEMBER 2020

Volume 1

Issue 7

Mahalo Kahikina Logan



Aloha, Kakou –

For the past four months, the national leaders of the **IATSE, SAG-AFTRA, DGA and Teamsters 399** have been in negotiations with the Alliance of Motion Picture and Television Producers (**AMPTP**) on how to safely allow crew members to return to work. As of September 21st, 2020, a **Return-to-Work (RTW) Agreement** has been reached, and the entire agreement was emailed to the members and the summary has been uploaded to the website.

International President Matthew Loeb spearheaded the negotiations, engaging the other union leaders and keeping it forefront with the AMPTP. **Vice President Mike Miller, International Representative Vanessa Holtgrewe** and members of the bargaining committee worked tirelessly to get this done. Having four entertainment unions at the table demonstrated a collaboration that is rarely seen, and the producers saw firsthand the power of union solidarity.

The International is taking a **zero-tolerance** position. Refusing to take a test, wear PPE or abide by COVID-related safety protocols implemented by the employer deem you ineligible for hire and are grounds for termination. **The Coronavirus is deadly and damaging, and the International's stance to keep us safe is reflected in the agreement.**

Here are some of the highlights of the RTW Agreement. It starts on September 21st, 2020, and expires on April 30th, 2021. The bargaining parties will continue to meet over the coming months to discuss new and evolving information.

Everyone must take a **lab-based PCR diagnostic pre-employment test** and will receive a \$250 stipend if testing outside of their home on non-working days and \$20 if testing at home. No stipend is due if the employee is paid for the day, including travel days. A negative result must be obtained prior to starting work, preferably within 48 hours. Once you have a negative result, you are considered employed, and all sick leave and other working conditions apply.

Each show will decide whether to accept a negative test result from another show. Under no circumstances should a company ask you to waive your rights to sick leave. All employees will be **tested at least once a week** after the initial testing. Workers must divide up into **work groups** or "pods" to minimize contact. Be sure you know who is in your group when you start working and stay within your group. No cross-contamination.

If an employee tests positive, the infected person and their group will go into **quarantine** and receive up to 10 days of **Paid Sick Leave** per Producer for each day a person is absent from work due to an Eligible COVID-19 Event. Payment is capped at \$750 per day for up to 10 days and \$7,500 in the aggregate. Fringe benefits apply.

Please familiarize yourselves with the details of the safety protocols. Have a quarantine plan. Stock up on frozen or canned food since you can't leave the house and keep a change of clothes and toiletries in your car in case you need to quarantine away from home. Remember, these guidelines are still being tested on right now. We all need to take personal responsibility to stay safe. Keep your mask over your nose and mouth. PPE only works if you use it correctly. You cannot lose your job if you feel that working in an unsafe environment would jeopardize your health, so if you see something that isn't working for your situation, please notify the Job Steward, your Department Head or myself.

In closing, the work we do is very important. Some would say it is sacred. When we work, we serve. We serve our families by providing them comfort, love and security; we serve our employer with our creativity and work ethic; we serve each other by being safe and helping each other and we serve our industry by doing our best every day. **MAHALO** for your sacrifice in paving a **Safe Way Forward**. We appreciate all of you.

ALOHA!

Aloha, members of Local 665,

By and large, Hawaii residents have lamented the relatively minor role that our state plays in these quadrennial elections. However, it's vital to our industry's and our islands' future that we mobilize our vote. Your ballot can have an immense impact in your County and our State. As you all know, Hawaii's General Election will be done entirely by mail. It is imperative that we make a plan and vote early.

13 of the 25 Hawaii State Senators and all 51 of the Hawaii State Representatives are up for election this year. If you are unsure as to what district you live in, visit <https://elections.hawaii.gov/resources/maps/election-maps/>

Online Voter Registration is simple to use. You'll need your current HI Driver's License or HI State ID and your Social Security Number. This online service allows us to: 1) Register to Vote, 2) Update your existing Voter Registration, and 3) Confirm your Voter Registration address. If you haven't already done so, or are unsure as to your registration status, online voter registration is available at <https://olvr.hawaii.gov/>

The current administration has created significant hurdles in the election process. The most recent of which has been the attack on the US Postal System. Ballots are expected to be delivered within 18 days of Election Day. Same-day registration and ballot casting is available at Voter Service Centers (if you choose to cast your ballot in this way, please make sure to wear a mask, stay physically distant, and bring your current state ID). For a statewide interactive map of Voter Service Centers, Ballot Deposit boxes, and US Postal resources, visit <https://hstatgis.maps.arcgis.com/apps/MapSeries/index.html?appid=40a88743b85b4fbfb8cf6128bacfedcf>

Last, but not least, the HI State AFL-CIO has published their endorsements for the 2020 General Election, which can be found in the "Documents" section of our website (<https://iatse665.org/member-links/>). After our 665 Political Action Committee has had a chance to meet, we'll have a resource sheet encompassing Hawaii's political landscape available for the membership to refer to while filling out our ballots.

As production begins on Oahu and the Neighbor Islands, I'm encouraged by the responsibility our workers have exhibited. You are the consummate professionals that we know you to be. Please take care of one another out there. It's exciting that the weeks-long AMPTP negotiations have concluded. The "Return To Work" agreement and a summary of the RTW agreement have also been posted in the "Documents" area of our website. Our wholehearted thanks go out to all of the Basic Craft unions and their bargaining units for slogging it out and finding a conclusion to that lengthy process. Wear appropriate PPE, stay physically distant, and follow all job-specific protocols and safety guidelines. Stay safe out there, fam.

In Solidarity,

Tuia'ana Scanlan
President, IATSE Local 665



Drive - Through Flu Vaccination Clinics

Saturday Oct 3rd and Sunday Oct 4th, 2020

TIME: 8 a.m. - 12:00 p.m.

Seniors only (age 65 and older) from 8:00-9:00 a.m.

Kakaako Waterfront Park, Parking Lot

Enter at Ward Avenue ONLY! (See map on page 2.)

YOU MUST WEAR A MASK AND BRING THE FOLLOWING ITEMS TO RECEIVE YOUR FLU SHOT:

✓ **FOR THOSE WHO ARE INSURED (Must be 18 years or older)**

The following items MUST be COMPLETED AND BROUGHT WITH YOU to receive the flu vaccination if you have insurance:

1. Completed Flu Shot Questionnaire and Consent Form
2. Photocopies of your State issued ID and Medical Insurance Card(s). We must receive all your medical cards to coordinate benefits, if you have more than one medical insurance plan
3. Medicare Advantage plan members must have their Medicare A/B cards, as well as their advantage plan card (e.g., HMSA, HUMANA, Kaiser, UHC etc.)
4. If you are not the primary subscriber on your insurance plan, you will also provide the subscriber's Legal Name, Date of Birth, Gender, Relationship (spouse, parent)

✓ **FOR THOSE WHO ARE UNINSURED (Must be 3 years or older)**

1. Must bring your Union ID Card
2. Completed Flu Shot Questionnaire and Consent Form
3. Photocopy of your State issued ID, School ID or Birth Certificate



BROUGHT TO YOU BY

LABOR COMMUNITY
SERVICES PROGRAM



MY HEALTH
SOLUTIONS

THANK YOU TO OUR GENEROUS SPONSORS

accredo®



VERY IMPORTANT!

To access the flu shot drive through event, enter **ONLY** from the Ward Avenue side of the park and proceed onto Ilalo Street. From Ilalo Street turn left into the Kakaako Waterfront Parking lot from Cooke Street.

Please have all completed documentation and photocopies of your ID and Medical Insurance Cards ready to provide to the intake staff.

Call or email Miri of My Health Solutions with any questions
Mobile: 808 294-1399 email miri@mhshawaii.org



NEWS & VIEWS SUBMISSION GUIDELINES

Local 665 News & Views accepts submissions in person, mail, or e-mail (preferred).
All submissions are subject to review and approval.

- Submissions should be checked for accuracy and spelling. Local 665 News & Views takes no responsibility for errors in submitted content.
 - All persons in submitted photographs must be named to be eligible for publication.
 - Submissions are subject to revision and editing.
- Local 665 News & Views does not guarantee submissions will be printed.

NEXT DEADLINE FOR SUBMISSIONS: October 10, 2020

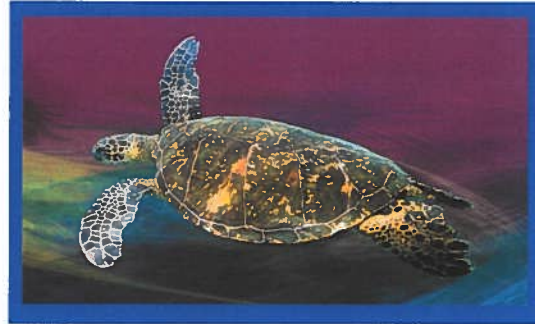
E-mail: [secretary - treasurer@iatse665.org](mailto:secretary-treasurer@iatse665.org)

Subject: NEWS & VIEWS Submissions

Mail: NEWS & VIEWS Submissions
IATSE Local 665
501 Sumner Street, #605
Honolulu, HI, 96817

Questions? Comments?
Call... (808) 596-0227

Editor- in-Chief Robin Kekuewa Wong
Assistant to Editor..... Tom Curtis



NEWS & VIEWS
IATSE LOCAL 665
501 Sumner Street #605
Honolulu, HI 96817

